

pmc cylinders

YOUR SOLUTION PROVIDER

IN HYDRAULIC PISTON ACCUMULATORS
AND PULSATION DAMPERS



PISTON ACCUMULATORS	3
<hr/>	
Technical specification of standard PAC	5
<hr/>	
PAC Standard range – pressure 250 bar	6
<hr/>	
PAC Standard range – pressure 350 bar	8
<hr/>	
Technical specification of standard PAS	10
<hr/>	
PAS standard range - Pressure 242-350 bar (stainless steel)	11
<hr/>	
Customized piston accumulators	12
<hr/>	
Options	13
<hr/>	
Code key for piston accumulators	14
<hr/>	
GAS BOTTLES	14
<hr/>	
PULSATION DAMPER PRC	15
<hr/>	
ACCESSORIES	18
<hr/>	
Safety- and shut-off block	19
<hr/>	



PISTON ACCUMULATORS ARE IN OUR DNA

PMC Cylinders AB has 40 years experience of manufacturing piston accumulators.

We are presenting here our two series of piston accumulators which are CE-approved as per PED 2014/68/EU and issued by DNV/GL. Design code and manufactured according to EN 14359:2006 + A1.

The two standard series are:

PAC - Piston Accumulators Carbon steel

Carbon steel piston accumulators for 250 and 350 bar operating pressure are suitable for applications in the solution areas of Mobile, Industry, Energy, Offshore & Marine.

PAS - Piston Accumulators Stainless steel

Stainless steel piston accumulators for 242 bar to 350 bar operating pressure are particularly suitable for applications eg. in Offshore & Marine.

We also provide customized accumulators of PAC and PAS up to design pressure 920 bar.

Example areas of use

The piston accumulators are used in applications for shock absorption, braking systems, energy storage, power backup and volume compensation.



PISTON ACCUMULATORS FOR ALL NEEDS

Advantages

- Can easily be connected to gas (backup) bottles to generate larger accumulator systems.
- As options, visual as well as electric piston position indicators can be installed.
- We provide complete accumulator racks and other hydraulic solutions.
- Accessories as clamps, seal kits, gas valves, safety blocks, burst discs and charging kits are available.
- We also provide other products such as gas bottles and pulsation dampers.
- In additions to our standard range, we can offer ports and specific sizes if required.

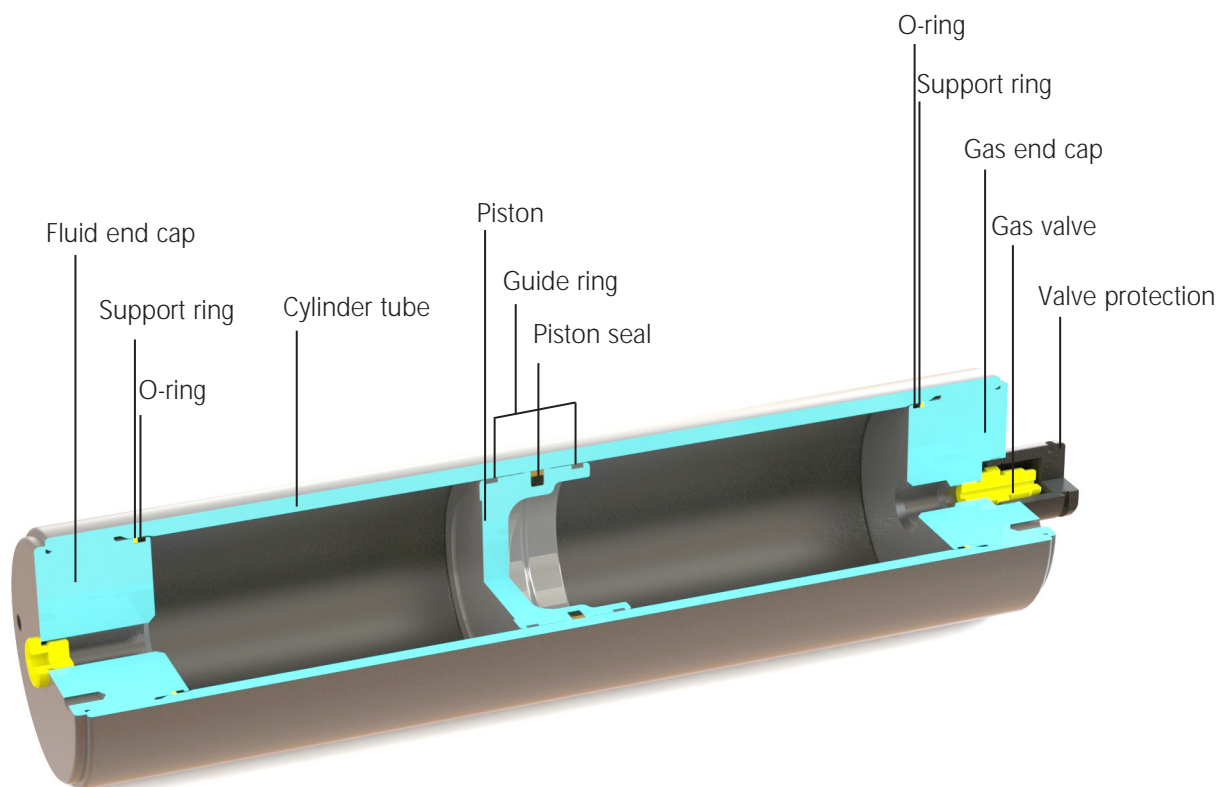
Effectiveness pays

With PMC Cylinders handling the entire process from design and manufacture through to sales, decision paths are short and lead times reduced which all results in a positive effect on prices for you, the customer.



Technical specification of standard PAC

Product code	PAC = Piston Accumulators Carbon steel
Design approval	CE approved as per PED 2014/68/EU
ID (mm)	50, 80, 100, 140, 200, 250, 360
Capacity (litre)	0,2 – 400
Max working pressure (bar)	250 and 350 (Remark \varnothing 360 mm 220 bar)
Max operating temperature	- 20°C / + 80°C
End caps	Service-friendly with threaded end caps
Piston	Steel or aluminium
Gas valve	Minimess M16 x 2 or MS288889-2 5/16"-32 UNF stainless steel
Seals	PU/NBR
Painting	Black, 2-component, one coat paint



PAC Standard range – pressure 250 bar

Volume litres	ID mm	OD mm	Length mm incl. valve protection	Fluid port	Weight kg	Part number	Product name (type-pressure-diam-vol.)
---------------	-------	-------	----------------------------------	------------	-----------	-------------	--

Dimension 50 mm see table 350 bar

1	80	92	360	G 3/4"	8,5	6810006-001	PAC-250-080-001
2	80	92	559	G 3/4"	11	6810006-002	PAC-250-080-002
3	80	92	758	G 3/4"	14	6810006-003	PAC-250-080-003
4	80	92	957	G 3/4"	16	6810006-004	PAC-250-080-004

1	100	115	294	G 1"	13	6810001-001	PAC-250-100-001
2	100	115	421	G 1"	16	6810001-002	PAC-250-100-002
4	100	115	675	G 1"	21	6810001-004	PAC-250-100-004
6	100	115	929	G 1"	26	6810001-006	PAC-250-100-006
8	100	115	1183	G 1"	31	6810001-008	PAC-250-100-008
10	100	115	1437	G 1"	36	6810001-010	PAC-250-100-010
12	100	115	1691	G 1"	41	6810001-012	PAC-250-100-012
15	100	115	2072	G 1"	49	6810001-015	PAC-250-100-015

4	140	160	480	G 1 1/2"	35	6810007-004	PAC-250-140-004
6	140	160	610	G 1 1/2"	40	6810007-006	PAC-250-140-006
8	140	160	740	G 1 1/2"	45	6810007-008	PAC-250-140-008
10	140	160	870	G 1 1/2"	50	6810007-010	PAC-250-140-010
12	140	160	1000	G 1 1/2"	55	6810007-012	PAC-250-140-012
15	140	160	1195	G 1 1/2"	62	6810007-015	PAC-250-140-015
20	140	160	1520	G 1 1/2"	74	6810007-020	PAC-250-140-020
25	140	160	1845	G 1 1/2"	86	6810007-025	PAC-250-140-025
30	140	160	2170	G 1 1/2"	98	6810007-030	PAC-250-140-030

10	200	230	563	G 2"	79	6810014-010	PAC-250-200-010
15	200	230	723	G 2"	90	6810014-015	PAC-250-200-015
20	200	230	882	G 2"	102	6810014-020	PAC-250-200-020
25	200	230	1041	G 2"	114	6810014-025	PAC-250-200-025
30	200	230	1200	G 2"	126	6810014-030	PAC-250-200-030
40	200	230	1518	G 2"	149	6810014-040	PAC-250-200-040
50	200	230	1836	G 2"	173	6810014-050	PAC-250-200-050
60	200	230	2155	G 2"	197	6810014-060	PAC-250-200-060
70	200	230	2473	G 2"	220	6810014-070	PAC-250-200-070
80	200	230	2792	G 2"	244	6810014-080	PAC-250-200-080
90	200	230	3110	G 2"	267	6810014-090	PAC-250-200-090
100	200	230	3428	G 2"	291	6810014-100	PAC-250-200-100
110	200	230	3746	G 2"	315	6810014-110	PAC-250-200-110
120	200	230	4064	G 2"	338	6810014-120	PAC-250-200-120
130	200	230	4382	G 2"	362	6810014-130	PAC-250-200-130

PAC Standard range – pressure 250 bar

Volume litres	ID mm	OD mm	Length mm incl. valve protection	Fluid port	Weight kg	Part number	Product name (type-pressure-diam-vol.)
50	250	286	1317	G 2"	230	6810008-050	PAC-250-250-050
60	250	286	1521	G 2"	254	6810008-060	PAC-250-250-060
70	250	286	1725	G 2"	278	6810008-070	PAC-250-250-070
80	250	286	1929	G 2"	301	6810008-080	PAC-250-250-080
90	250	286	2133	G 2"	325	6810008-090	PAC-250-250-090
100	250	286	2337	G 2"	349	6810008-100	PAC-250-250-100
110	250	286	2541	G 2"	372	6810008-110	PAC-250-250-110
120	250	286	2745	G 2"	396	6810008-120	PAC-250-250-120
130	250	286	2949	G 2"	420	6810008-130	PAC-250-250-130
140	250	286	3153	G 2"	443	6810008-140	PAC-250-250-140
150	250	286	3357	G 2"	467	6810008-150	PAC-250-250-150
160	250	286	3561	G 2"	491	6810008-160	PAC-250-250-160
170	250	286	3765	G 2"	514	6810008-170	PAC-250-250-170
180	250	286	3969	G 2"	538	6810008-180	PAC-250-250-180
190	250	286	4173	G 2"	562	6810008-190	PAC-250-250-190
200	250	286	4377	G 2"	585	6810008-200	PAC-250-250-200
210	250	286	4581	G 2"	609	6810008-210	PAC-250-250-210
220	250	286	4785	G 2"	633	6810008-220	PAC-250-250-220
100	360	419	1415	G 2"	614	6810145-100	PAC-220-360-100*
150	360	419	1906	G 2"	753	6810145-150	PAC-220-360-150*
200	360	419	2398	G 2"	893	6810145-200	PAC-220-360-200*
250	360	419	2889	G 2"	1033	6810145-250	PAC-220-360-250*
300	360	419	3380	G 2"	1173	6810145-300	PAC-220-360-300*
350	360	419	3872	G 2"	1313	6810145-350	PAC-220-360-350*
400	360	419	4363	G 2"	1453	6810145-400	PAC-220-360-400*

* Standard in 220 bar

PAC Standard range – pressure 350 bar

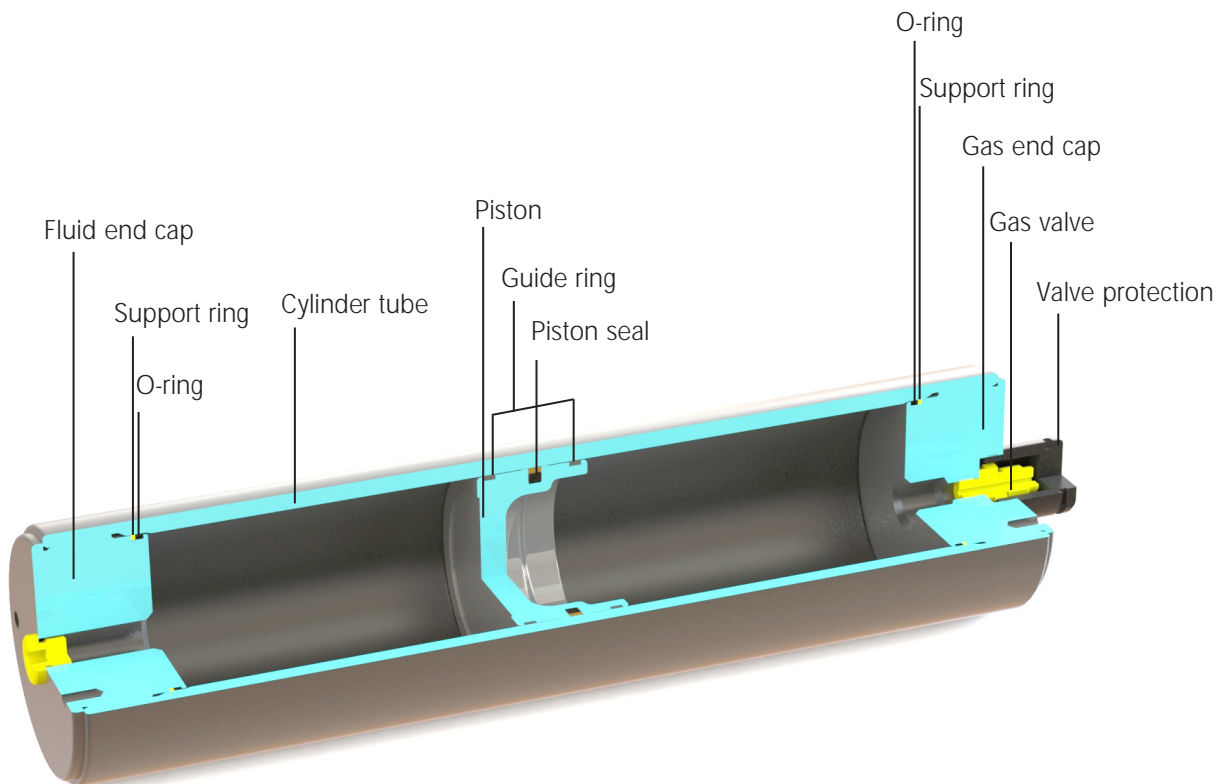
Volume litres	ID mm	OD mm	Length mm incl. valve protection	Fluid port	Weight kg	Part number	Product name (type-pressure-diam-vol.)
0,2	50	60	241	G 1/2"	3,1	6810005-0,2	PAC-350-050-0,2
0,4	50	60	343	G 1/2"	3,8	6810005-0,4	PAC-350-050-0,4
0,6	50	60	445	G 1/2"	4,5	6810005-0,6	PAC-350-050-0,6
0,8	50	60	547	G 1/2"	5,2	6810005-0,8	PAC-350-050-0,8
1	80	96	360	G 3/4"	9,7	6810009-001	PAC-350-080-001
2	80	96	559	G 3/4"	13	6810009-002	PAC-350-080-002
3	80	96	758	G 3/4"	17	6810009-003	PAC-350-080-003
4	80	96	957	G 3/4"	21	6810009-004	PAC-350-080-004
1	100	120	294	G 1"	15	6810010-001	PAC-350-100-001
2	100	120	421	G 1"	19	6810010-002	PAC-350-100-002
4	100	120	675	G 1"	26	6810010-004	PAC-350-100-004
6	100	120	929	G 1"	33	6810010-006	PAC-350-100-006
8	100	120	1183	G 1"	40	6810010-008	PAC-350-100-008
10	100	120	1437	G 1"	46	6810010-010	PAC-350-100-010
12	100	120	1691	G 1"	53	6810010-012	PAC-350-100-012
15	100	120	2072	G 1"	64	6810010-015	PAC-350-100-015
4	140	170	480	G 1 1/2"	42	6810011-004	PAC-350-140-004
6	140	170	610	G 1 1/2"	49	6810011-006	PAC-350-140-006
8	140	170	740	G 1 1/2"	56	6810011-008	PAC-350-140-008
10	140	170	870	G 1 1/2"	63	6810011-010	PAC-350-140-010
12	140	170	1000	G 1 1/2"	70	6810011-012	PAC-350-140-012
15	140	170	1195	G 1 1/2"	80	6810011-015	PAC-350-140-015
20	140	170	1520	G 1 1/2"	98	6810011-020	PAC-350-140-020
25	140	170	1845	G 1 1/2"	115	6810011-025	PAC-350-140-025
30	140	170	2170	G 1 1/2"	132	6810011-030	PAC-350-140-030
10	200	240	563	G 2"	94	6810012-010	PAC-350-200-010
15	200	240	723	G 2"	111	6810012-015	PAC-350-200-015
20	200	240	882	G 2"	128	6810012-020	PAC-350-200-020
25	200	240	1041	G 2"	145	6810012-025	PAC-350-200-025
30	200	240	1200	G 2"	162	6810012-030	PAC-350-200-030
40	200	240	1518	G 2"	196	6810012-040	PAC-350-200-040
50	200	240	1836	G 2"	231	6810012-050	PAC-350-200-050
60	200	240	2155	G 2"	265	6810012-060	PAC-350-200-060
70	200	240	2473	G 2"	299	6810012-070	PAC-350-200-070
80	200	240	2792	G 2"	333	6810012-080	PAC-350-200-080
90	200	240	3110	G 2"	368	6810012-090	PAC-350-200-090
100	200	240	3428	G 2"	402	6810012-100	PAC-350-200-100
110	200	240	3746	G 2"	436	6810012-110	PAC-350-200-110
120	200	240	4064	G 2"	470	6810012-120	PAC-350-200-120
130	200	240	4382	G 2"	504	6810012-130	PAC-350-200-130

PAC Standard range – pressure 350 bar

Volume litres	ID mm	OD mm	Length mm incl. valve protection	Fluid port	Weight kg	Part number	Product name (type-pressure-diam-vol.)
50	250	300	1317	G 2"	295	6810013-050	PAC-350-250-050
60	250	300	1521	G 2"	329	6810013-060	PAC-350-250-060
70	250	300	1725	G 2"	380	6810013-070	PAC-350-250-070
80	250	300	1929	G 2"	397	6810013-080	PAC-350-250-080
90	250	300	2133	G 2"	431	6810013-090	PAC-350-250-090
100	250	300	2337	G 2"	465	6810013-100	PAC-350-250-100
110	250	300	2541	G 2"	499	6810013-110	PAC-350-250-110
120	250	300	2745	G 2"	533	6810013-120	PAC-350-250-120
130	250	300	2949	G 2"	567	6810013-130	PAC-350-250-130
140	250	300	3153	G 2"	601	6810013-140	PAC-350-250-140
150	250	300	3357	G 2"	635	6810013-150	PAC-350-250-150
160	250	300	3561	G 2"	669	6810013-160	PAC-350-250-160
170	250	300	3765	G 2"	703	6810013-170	PAC-350-250-170
180	250	300	3969	G 2"	737	6810013-180	PAC-350-250-180
190	250	300	4173	G 2"	771	6810013-190	PAC-350-250-190
200	250	300	4377	G 2"	805	6810013-200	PAC-350-250-200
210	250	300	4581	G 2"	839	6810013-210	PAC-350-250-210
220	250	300	4785	G 2"	873	6810013-220	PAC-350-250-220

Technical specification of standard PAS

Product code	PAS = Piston Accumulators Stainless steel
Design approval	CE approved as per PED 2014/68/EU
ID (mm)	100, 180, 195, 210
Capacity (litre)	1 – 100
Max working pressure (bar)	242 to 350
Max operating temperature	-20°C / +50°C
End caps	Service-friendly with threaded end caps
Piston	Aluminium
Gas valve	Minimess M16 x 2 or MS288889-2 5/16"-32 UNF stainless steel
Seals	PU/NBR



PAS standard range - Pressure 242-350 bar (stainless steel)

Volume litres	ID mm	OD mm	Length mm incl. valve protection	Fluid port	Weight kg	Part number	Product name (type-pressure-diam-vol.)
1	100	125	325	G 1/2"	17	6820003-001	PAS-250-100-001
2	100	125	452	G 1/2"	21	6820003-002	PAS-250-100-002
4	100	125	707	G 1/2"	30	6820003-004	PAS-250-100-004
6	100	125	961	G 1/2"	39	6820003-006	PAS-250-100-006
8	100	125	1216	G 1/2"	48	6820003-008	PAS-250-100-008
10	100	125	1470	G 1/2"	56	6820003-010	PAS-250-100-010
12	100	125	1725	G 1/2"	65	6820003-012	PAS-250-100-012
15	100	125	2107	G 1/2"	78	6820003-015	PAS-250-100-015
1	100	132	325	G 1/2"	19	6820004-001	PAS-350-100-001
2	100	132	452	G 1/2"	24	6820004-002	PAS-350-100-002
4	100	132	707	G 1/2"	36	6820004-004	PAS-350-100-004
6	100	132	961	G 1/2"	48	6820004-006	PAS-350-100-006
8	100	132	1216	G 1/2"	59	6820004-008	PAS-350-100-008
10	100	132	1470	G 1/2"	71	6820004-010	PAS-350-100-010
12	100	132	1725	G 1/2"	82	6820004-012	PAS-350-100-012
15	100	132	2107	G 1/2"	100	6820004-015	PAS-350-100-015
10	180	212	662	G 1"	81	6820005-010	PAS-242-180-010
15	180	212	858	G 1"	96	6820005-015	PAS-242-180-015
20	180	212	1054	G 1"	111	6820005-020	PAS-242-180-020
25	180	212	1250	G 1"	126	6820005-025	PAS-242-180-025
30	180	212	1446	G 1"	141	6820005-030	PAS-242-180-030
35	180	212	1642	G 1"	156	6820005-035	PAS-242-180-035
40	180	212	1838	G 1"	171	6820005-040	PAS-242-180-040
10	195	236	607	G 1"	106	6820007-010	PAS-242-195-010
20	195	236	942	G 1"	143	6820007-020	PAS-242-195-020
30	195	236	1277	G 1"	179	6820007-030	PAS-242-195-030
40	195	236	1612	G 1"	216	6820007-040	PAS-242-195-040
50	210	250	1423	G 1"	212	6820027-50	PAS-242-210-050
60	210	250	1711	G 1"	245	6820027-60	PAS-242-210-060
70	210	250	2000	G 1"	278	6820027-70	PAS-242-210-070
80	210	250	2289	G 1"	311	6820027-80	PAS-242-210-080
90	210	250	2866	G 1"	344	6820027-90	PAS-242-210-090
100	210	250	2866	G 1"	377	6820027-100	PAS-242-210-100

Customized piston accumulators

We manufacture customized piston accumulators in different dimensions and pressures.

Dimensions 50-500 mm

Material – eg. Carbon steel, Stainless steel and Duplex stainless steel

Design pressure up to 920 bar



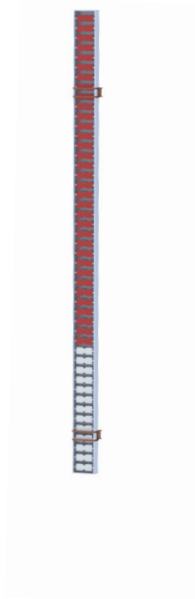
Piston accumulator 690 bar with magnetic position indicator

Options - Piston position indicator available with visual indication and electronic monitoring output of 4-20 mA.

Piston accumulators with magnetic position indicator



Flapper indicator



Transmitter



Switch



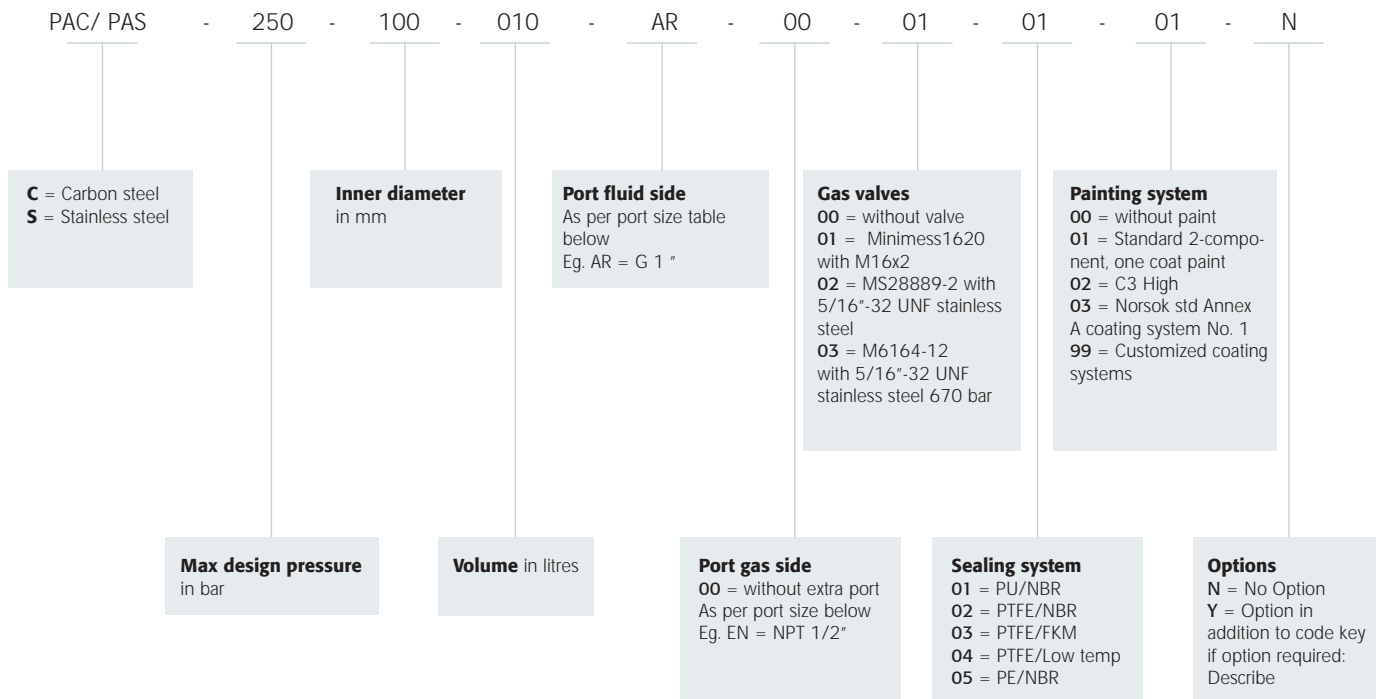
Piston accumulator with wire position indicator



Piston accumulator with rack



Code key for piston accumulators



Port size table

		K	L	M	N	P	R	S	T	U	V	W
Thread per ISO 228-1 (G)	A	G 1/8"	G 1/4"	G 3/8"	G 1/2"	G 3/4"	G 1"	G 1 1/4"	G 1 1/2"	G 2"	G 2 1/2"	G 3"
Thread per ISO 6149-1 (M)	B	M10x1	M12x1,5	M14x1,5	M18x1,5	M22x1,5	M27x2	M33x2	M42x2	M48x2		
SAE-flange ISO 6162-1 3000 psi	C	1/2"	3/4"	1"	1 1/4"	1 1/2"	2"	2 1/2"	3"			
SAE-flange ISO 6162-2 6000 psi	D	1/2"	3/4"	1"	1 1/4"	1 1/2"	2"	2 1/2"	3"			
NPT	E	1/8"	1/4"	3/8"	1/2"	3/4"	1"	1 1/4"	1 1/2"	2"		
Auto clamp	F		1/4"	3/8"								
SAE O-ring port ISO 11926-1	G	#8	#12	#16	#20	#24	#32					

Download manuals and make calculations on our website www.pmccylinders.com

GAS BOTTLES

PMC Cylinders can offer gas bottles with threaded end caps in same sizes, pressure and steel grade as our standard piston accumulators or in special sizes if required.

Gas bottles can reduce the size and cost of a hydraulic system.

PULSATION DAMPER PRC

Pulsation Reduction Carbon



Reduces noise

Reduces vibration

Extends the life span

Improves the working environment

Function

PMC Groups reactive pulsation damper PRC reduces the effect of harmful pulsations and vibrations in hydraulic systems. Pulsations from the hydraulic pump causing noise and sound from the frame. This is a serious environmental problem in many industrial plants, mobile vehicles and marine applications.

Pulsations from the pump may also cause damage in terms of wear at the hydraulic components in the system as well as on the sealing systems.

Pulsation damper PRC reduces noise, sound from the frame and vibrations that extend life span of the components in the hydraulic system. This will also create conditions for none leaking and silent systems.

Pulsation damper PRC gets the best properties at frequencies from 100 Hz and above. As the pulsation damper PRC does not include any moving parts no maintenance is required. The high and low pulsation amplitudes will delete each other by reflexion within the pulsation damper.

Installation

Pulsation damper PRC is installed at the pressure side after the pump. The pulsation damper PRC can be installed both vertically and horizontally. It is recommended to use a hose between the pump and the pulsation damper PRC but it can also be mounted directly to the pump. Full flow through the pump must pass the flow direction in accordance to the arrow shown at the sticker.

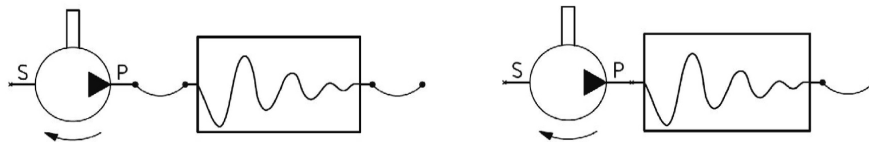
To get optimized function the pulsation damper PRC should be assembled within the distance shown in below formula:

$$160/\text{frequency of the pump} = \text{distance in meter}$$

Example: Piston pump with 9 pistons, 1450 RPM, = $9 \times 1450/60 = 218 \text{ Hz}$
 $160/218 = 0.73 \text{ meter}$

When using a hose it is important that the length is some shorter than calculated max distance.

If the distance to the pulsation damper PRC is too long, the result might be reduced or no damping due to parallel oscillation.



Test results of noise level without and with Pulsation damper

PRC-350-100-004-AR-N

Fluid liters/min	Pressure	Noise level without PRC dB (A)	Noise level with PRC dB (A)	Noise reduction dB (A)
70	173	114,8	107,1	7,7
70	70	110,2	106,0	4,2
125	216	116,6	108,0	8,6
125	173	114,5	107,0	7,5
125	70	113,0	106,5	6,5
170	173	117,5	106,0	11,5
170	120	115,2	106,2	9,0
170	70	114,0	106,0	8,0

Standard model

Part no	Model	Max working pressure (bar)	Max flow (l/min)	Bore dim. (mm)	Bore dim. (mm)	Length (mm)	Weight (Kg)	Port, same at both ends	Clamps
6830014-0,5	PRC-250-080-0,5-AP-N	250	60	80	92	200	6	G 3/4"	926269
6830015-002	PRC-250-100-002-AR-N	250	60	100	115	350	13	G1"	926270
6830015-004	PRC-250-100-004-AR-N	250	150	100	115	598	18	G1"	926270
6830016-002	PRC-350-100-002-AR-N	350	60	100	120	325	15	G1"	926270
6830016-004	PRC-350-100-004-AR-N	350	150	100	120	580	22	G1"	926270
6830017-004	PRC-300-140-004-AT-N	300	240	140	165	356	32	G 1 1/2"	926365
6830018-009	PRC-350-180-009-AU-N	350	350	180	220	526	79	G 2"	928670
6830019-009	PRC-350-180-009-DN-N	350	360	180	220	526	80	SAE 1 1/4" 6000	928670
6830020-010	PRC-350-200-010-DR/AT-N	350	600	200	239	610	101	SAE 2" 6000/ G 1 1/2"	928678

Code key for PRC

PRC	250	100	002	AR	N
C=carbon steel	Max WP 250-300-350 bar	Bore	Volume in litre	Port	N= standard Y= special

Port table

	N	P	R	T	U
Threaded ISO 228-1 (G)	A	G 3/4"	G 1"	G1 1/2"	G 2"
SAE-flange ISO 6162-2 6000 PSI	D 1 1/4"		2"		

Painting system

Standard black combi-paint (primer/top coat) RAL 9005 Gloss 75%.

Clamps

Mounting clamp for easy mounting of Pulsation damper PRC can be offered.

ACCESSORIES

Clamps

Part no.	ID mm	OD mm	Product name (type-pressure-diam-vol.)
926268	50	57-62	PAC-350-050
926269	80	92-101	PAC-250/350-080
926270	100	109-117	PAC-250-100
929458	120	117-126	PAC 350-100
926365	140	160-165	PAC-250-140
929461	170	165-170	PAC 350-140
928670	180	215-225	PAC-300-180
926405	200	225-235	PAC-250-200
928678	200	235-245	PAC-350-200



Gas valve

Part no.	Pressure Bar	Material	Product name (type-pressure-diam-vol.)
926136	350	Stainless steel	MS28889-2 5/16"-32 UNF
927297	630	Zinc-Nickel	Minimess 1620 M16x2
926850	670	Stainless steel	M6164-12 5/16"-32 UNF



Pre-charging kits

Part no.	Product name
237463	Pre-charging kit for: 5/16"-32 UNF
237471	Pre-charging kit for: M16x2
237472	Pre-charging kit combi for: 5/16"-32 UNF och M16x2



Burst disc

Part no.	Pressure bar	Burst pressure bar +/- 5%
926271	175	217
926251	220	272
926248	250	310
926314	350	433



Seal kits - 250 bar standard for carbon steel, singel seal, 01=PU/NBR

Part no.	Dimension	Remark
PS6810006	ø80 mm	
PS6810001	ø100 mm	
PS6810007	ø140 mm	
PS6810014	ø200 mm	
PS6810008	ø250 mm	
PS6810015	ø360 mm	220 bar



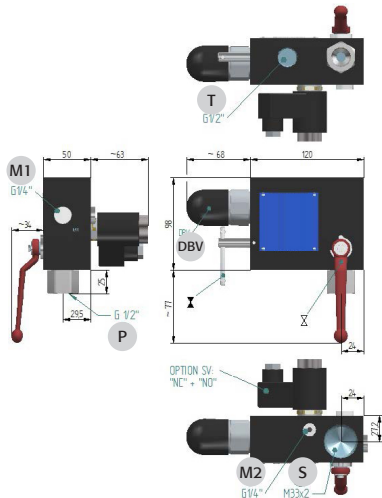
Seal kits - 350 bar standard for carbon steel, singel seal, 01=PU/NBR

Part no.	Dimension	Remark
PS6810005	ø50 mm	
PS6810009	ø80 mm	
PS6810010	ø100 mm	
PS6810011	ø140 mm	
PS6810012	ø200 mm	
PS6810013	ø250 mm	

Seal kits - 242-350 bar standard for stainless steel, singel seal, 01=PU/NBR

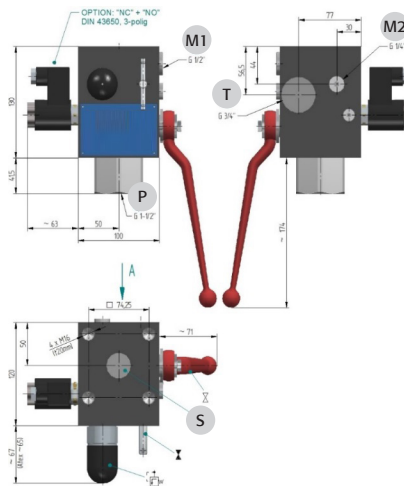
Part no.	Dimension	Remark
PS6820003	ø100 mm	290 bar
PS6820004	ø100 mm	350 bar
PS6820005	ø180 mm	242 bar
PS6820007	ø195 mm	242 bar

Safety- and shut-off block HSB 10, 20 and 32, standard ranges



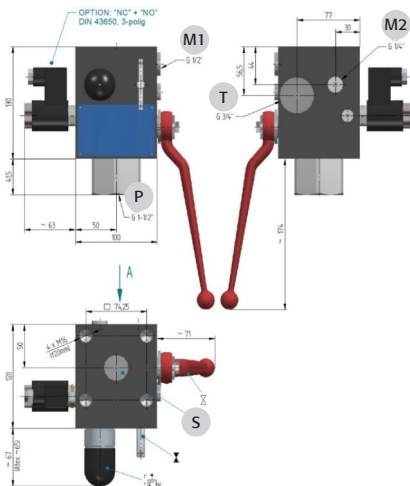
HSB 10

P	Port process G 1/2"
T	Port tank G 1/2"
S	Port accumulator
M1	Port gauge G 1/4"
M2	Port gauge G 1/4"
DBV	Port safety valve



HSB 20

P	Port process G 1"
T	Port tank G 3/4"
S	Port accumulator
M1	Port gauge G 1/2"
M2	Port gauge G 1/4"
DBV	Port safety valve



HSB 32

P	Port process G 1 1/2"
T	Port tank G 3/4"
S	Port accumulator
M1	Port gauge G 1/2"
M2	Port gauge G 1/4"
DBV	Port safety valve

Technical data:

MWP

Manual drain: 400 bar

Electrical drain: 350 bar

Design according to PED fluidgroup 2

Materials

Carbon steel, black oxide; FKM & POM

Other versions on request

Temperature range:

-10 °C bis 80 °C

Electrical data:

DC -12 / 24 V - 17 W

AC 230 V - 50-60 Hz

Protection standard IP 6

Connector DIN 43650

Other versions on request

Connectors:

Connectors for the different accu types see Datasheed HAS/HFS (see our home page).



PMC CYLINDERS AB
Box 20
SE - 567 21 Vaggeryd
SWEDEN

tel: +46 (0)393 365 00
www.pmccylinders.com

PMC Cylinders is part of Dacke Industri AB.

