

Pulsation damper PRC

Pulsation Reduction Carbon

pmcgroup™

Reduces noise - Reduces vibration -
Extends the life span -
Improves the working environment



Function

PMC Groups reactive pulsation damper PRC reduces the effect of harmful pulsations and vibrations in hydraulic systems. Pulsations from the hydraulic pump causing noise and sound from the frame. This is a serious environmental problem in many industrial plants, mobile vehicles and marine applications.

Pulsations from the pump may also cause damage in terms of wear at the hydraulic components in the system as well as on the sealing systems.

Pulsation damper PRC reduces noise, sound from the frame and vibrations that extend life span of the components in the hydraulic system. This will also create conditions for none leaking and silent systems.

Pulsation damper PRC gets the best properties at frequencies from 100 Hz and above.

As the pulsation damper PRC does not include any moving parts no maintenance is required.

The high and low pulsation amplitudes will delete each other by reflexion within the pulsation damper.

Installation

Pulsation damper PRC is installed at the pressure side after the pump.

The pulsation damper PRC can be installed both vertically and horizontally. It is recommended to use a hose between the pump and the pulsation damper PRC but it can also be mounted directly to the pump. Full flow through the pump must pass the flow direction in accordance to the arrow shown at the sticker.

To get optimised function the pulsation damper PRC should be assembled within the distance shown in below formula:

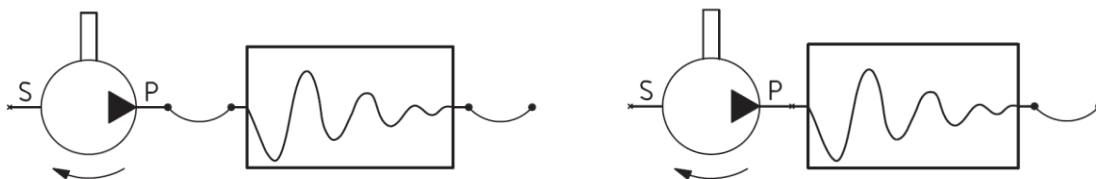
$160 / \text{frequency of the pump} = \text{distance in meter}$

Example: Piston pump with 9 pistons, 1450 RPM, = $9 \times 1450 / 60 = 218 \text{ Hz}$

$160 / 218 = 0.73 \text{ meter}$

When using a hose it is important that the length is some shorter than calculated max distance.

If the distance to the pulsation damper PRC is too long, the result might be reduced or no damping due to parallel oscillation.



Standard model

Part no	Model	Max working pressure (bar)	Max flow (l/min)	Bore dim. (mm)	Out-side dim (mm)	Length (mm)	Weight (Kg)	Port, same at both ends	Clamps
6830014-0,5	PRC-250-080-0,5-AP-N	250	60	80	92	200	6	G 3/4''	926269
6830015-002	PRC-250-100-002-AR-N	250	60	100	115	350	13	G1''	926270
6830015-004	PRC-250-100-004-AR-N	250	150	100	115	598	18	G1''	926270
6830016-002	PRC-350-100-002-AR-N	350	60	100	120	325	15	G1''	926270
6830016-004	PRC-350-100-004-AR-N	350	150	100	120	580	22	G1''	926270
6830017-004	PRC-300-140-004-AT-N	300	240	140	165	356	32	G 1 1/2''	926365
6830018-009	PRC-350-180-009-AU-N	350	350	180	220	526	79	G 2''	928670
6830019-009	PRC-350-180-009-DN-N	350	360	180	220	526	80	SAE 1 1/4'' 6000	928670
6830020-010	PRC-350-200-010-DR/AT-N	350	600	200	239	610	101	SAE 2'' 6000/ G 1 1/2''	928678

Code key for PRC

PRC	-	250	-	100	-	002	-	AR	-	N
C=carbon steel	-	Max WP 250-300-350 bar	-	Bore	-	Volume in litre	-	Port	-	N= standard Y= special

Port table

		N	P	R	T	U
Threaded ISO 228-1 (G)	A		G 3/4"	G 1"	G 1 1/2"	G 2"
SAE-flange ISO 6162-2 6000 psi	D	1 1/4"		2"		

Painting system

Standard black combi-paint (primer/top coat) RAL 9005 Gloss 75 %

Clamps

Mounting clamp for easy mounting of Pulsation damper PRC to the different dimensions

For tube dimension OD \varnothing 92-165



For tube dimension OD \varnothing 220-239



PMC CYLINDERS AB

Box 20

SE-567 21 Vaggeryd

Visiting address:


Frideborgsvägen 21

Tel: +46 (0) 393 365 00

www.pmccylinders.se

PMC Group is the Nordic region's leading provider of total solutions in the PMC segment – Power, Motion, Control. PMC Group has specialist competence in hydraulics, pneumatics, lubrication, electromechanics. The group develops, produces and sell both systems and components. The customers are mainly active in the Energy, Offshore & Marine, Industrial and Mobile systems areas.

Would you like more information about our hydraulic and lubrication systems? Visit our website www.pmcgroup.se

The logo for PMC Group, featuring the letters 'pmc' in a stylized, lowercase, blue font, followed by the word 'group' in a smaller, grey, lowercase font, and a trademark symbol (TM) to the right.

www.pmcgroup.se